



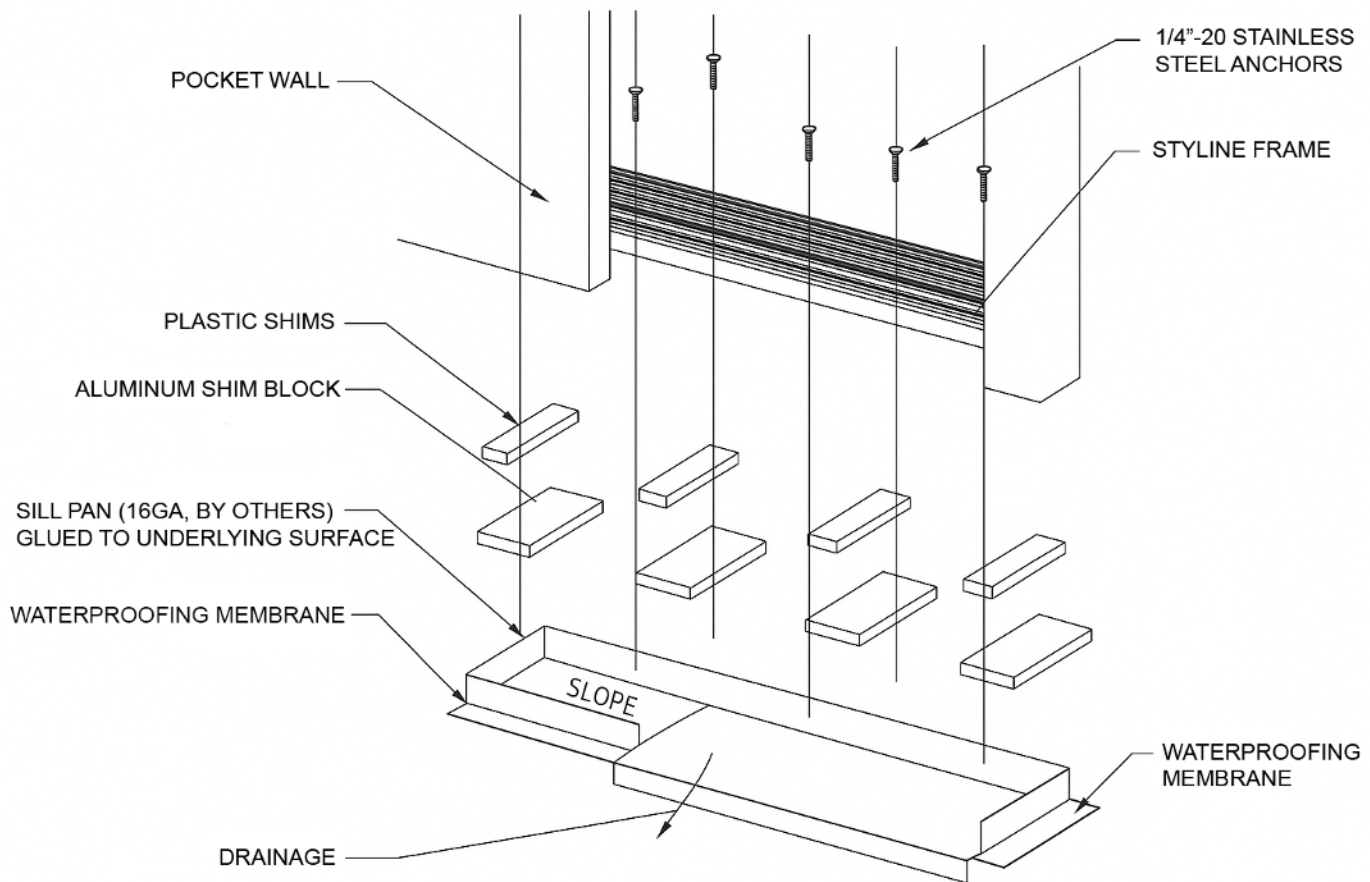
SHIPPING AND RECEIPT OF PRODUCT

The Frames, Panels, and Parts are typically shipped Knocked Down (KD), all parts are labeled with proper unit numbers by shop drawing sheet number and unit identifier. All parts should be spread to their proper locations throughout the install locations.

Step 1: Frames should be properly reassembled, matching corners will be identifiable, typically prefabricated (unless special application) and ready for reassembly. Reassemble frame with the supplied hardware and properly dam and caulk all corners.

LAYOUT AND INSTALLATION

Step 2: Stack and glue shims with Schnee SM7713 MS Permthane on Stainless Steel pan to level sill with F.F., use supplied Aluminum Shim Blocks as needed.



Step 3: Using Schnee SM7713 MS Permthane, glue sliding door sill and anchor in place (anchors are not always necessary), You may now begin to Plum, Level and Square the system into the opening.

Step 4: Shim and Anchor head and Jambs using supplied #10 wood screws.



Step 5: Install the wheel / bearing tracks in the operable sections of the sliding door system (please note that all wheel tracks should be set parallel with each other for a uniform look and feel) Then begin to lay the fixed extrusion shims for any fixed panel locations.

Step 6: Install Glass panels.

Step 7: Install the Pull Sweeps at the bottom of each glass panel, this component will sit in place at proper height of 1/4" above finished floor and set the bench mark for the interlocker stile installation.

Step 8: Stagger double-sided tape and 795 silicone on inside of interlockers (glass channel race) before installation. Use wood block and dead blow hammer to snap interlockers on to glass channels.

Step 9: Install handle on lead panel using quarter-sized blobs of silicone and supplied socket cap mounting screws. Shim 1/4" from sill track and tape with stretch tape. Close the door to Interlock all panels, check reveals, tape 1/4" shim inside handle jamb to set proper handle position for smooth locking. Check that lock has at least 1/8" play and is not scraping the inside of the lock receiver.

Step 10: Once alignment of all panels is set, install and adjust supplied bumper and filler blocks at the stopping point of each sliding and fixed panel. Drill and tap in center of slotted holes to allow adjustment.

Step 11: Cut to fit and install flush head and jamb fillers.

Step 12: Roll in vinyl at jamb, top, and bottom of fixed panel (interior only). Fill joint with silicone first to permanently hold vinyl in place.

Step 13: Install plastic screw caps throughout all Frame anchors and handle anchor locations.

Step 14: Check for smooth operation, even reveals, and ensure handle is not bumping on wheel tracks.

Step 15: Stack doors in the open position and adjust bumper blocks as needed. Cut flush fillers to fit and install.